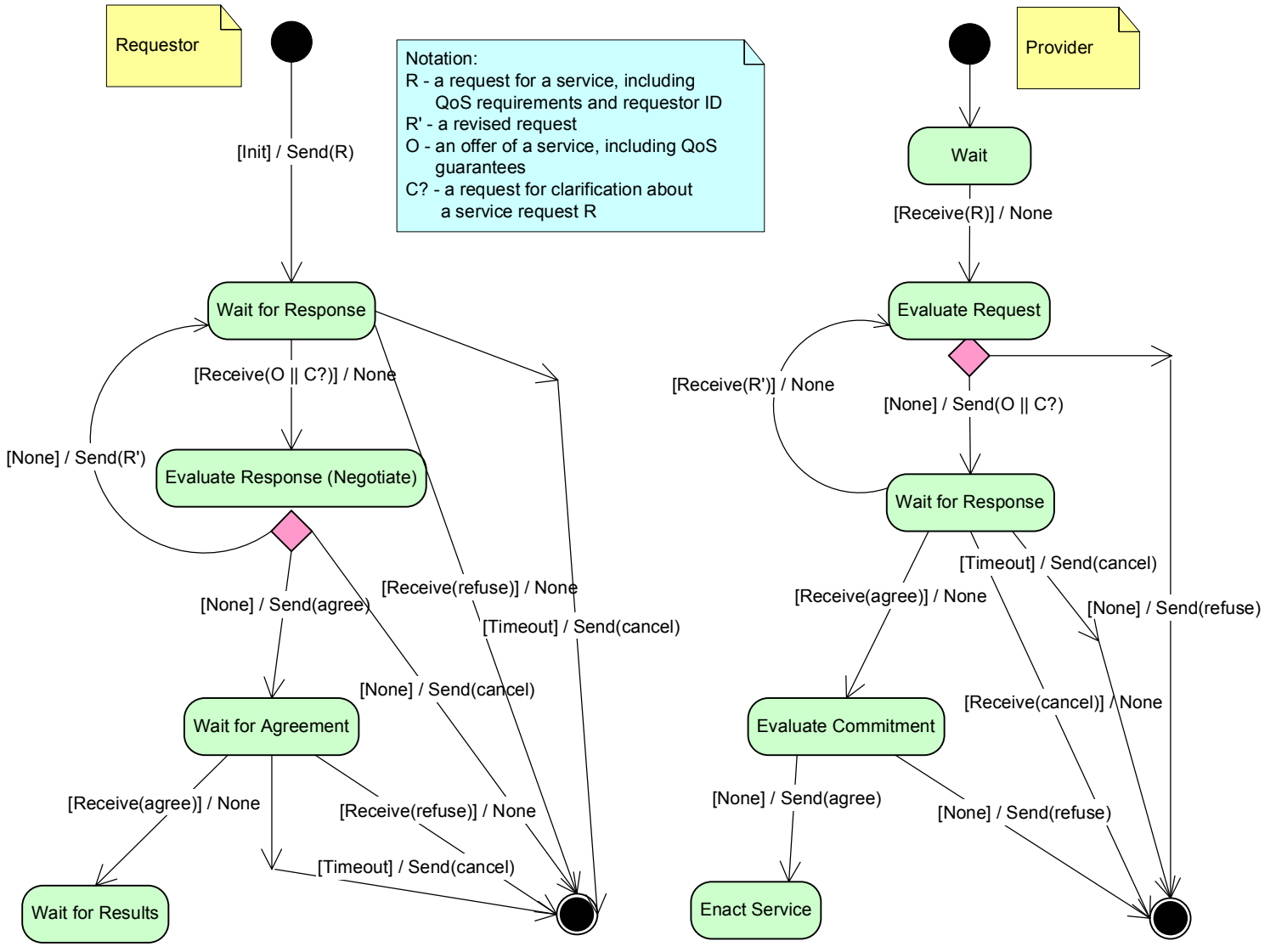


# UML State Diagrams for Semantic Web Service Engagement: (1) Commitment Protocol

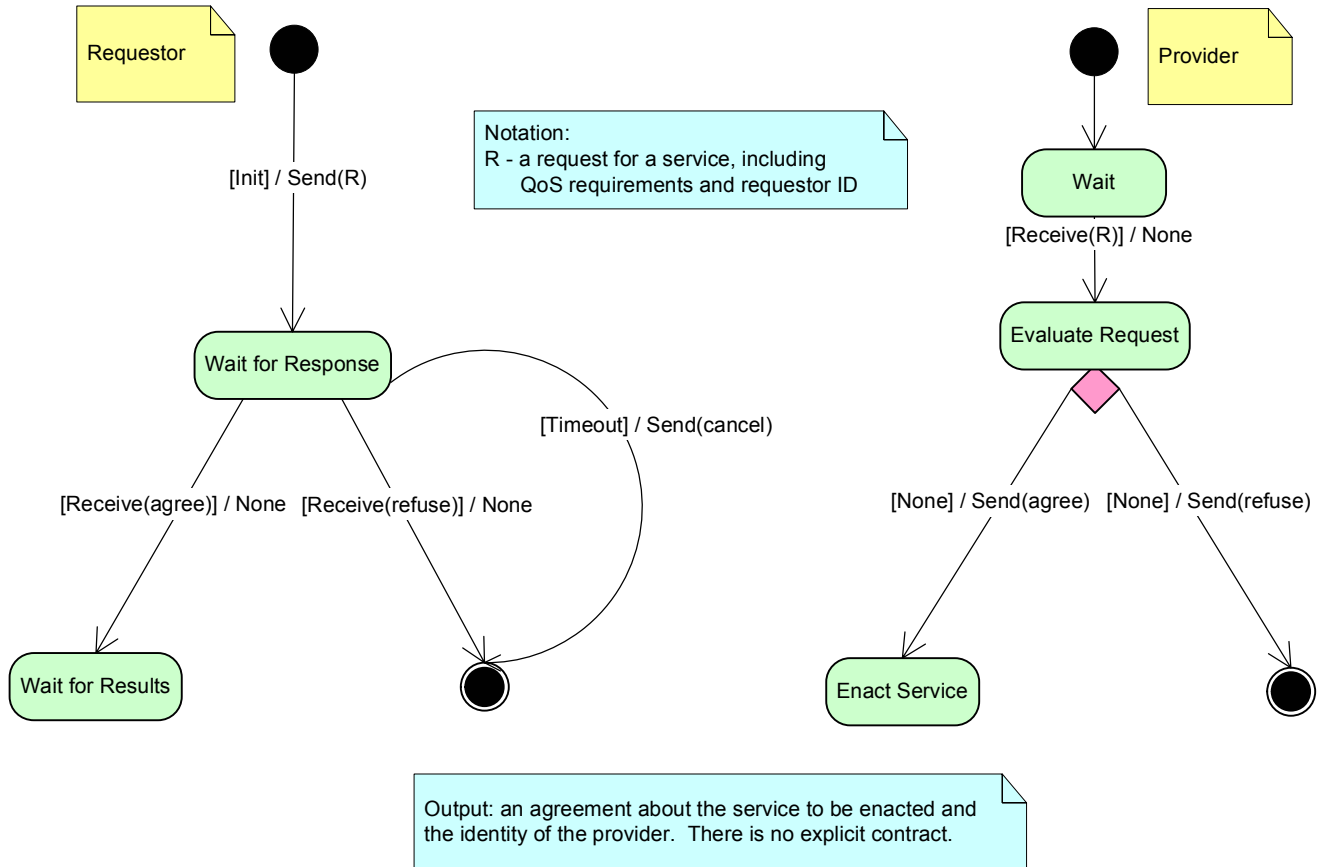
Precondition: the requestor has selected a candidate service provider, based on a prior discovery and selection process/protocol.  
Input: the identity of the candidate service provider and the requirements of the requestor.



Output: an agreement about the service to be enacted and the identity of the provider. The agreement includes the negotiated QoS.

## UML State Diagrams for Semantic Web Service Engagement: (2) FIPA Request Protocol

Precondition: the requestor has selected a candidate service provider, based on a prior discovery and selection process/protocol.  
Input: the identity of the candidate service provider and the requirements of the requestor.



## UML State Diagrams for Semantic Web Service Engagement: (3) FIPA Query-Reply Protocol

