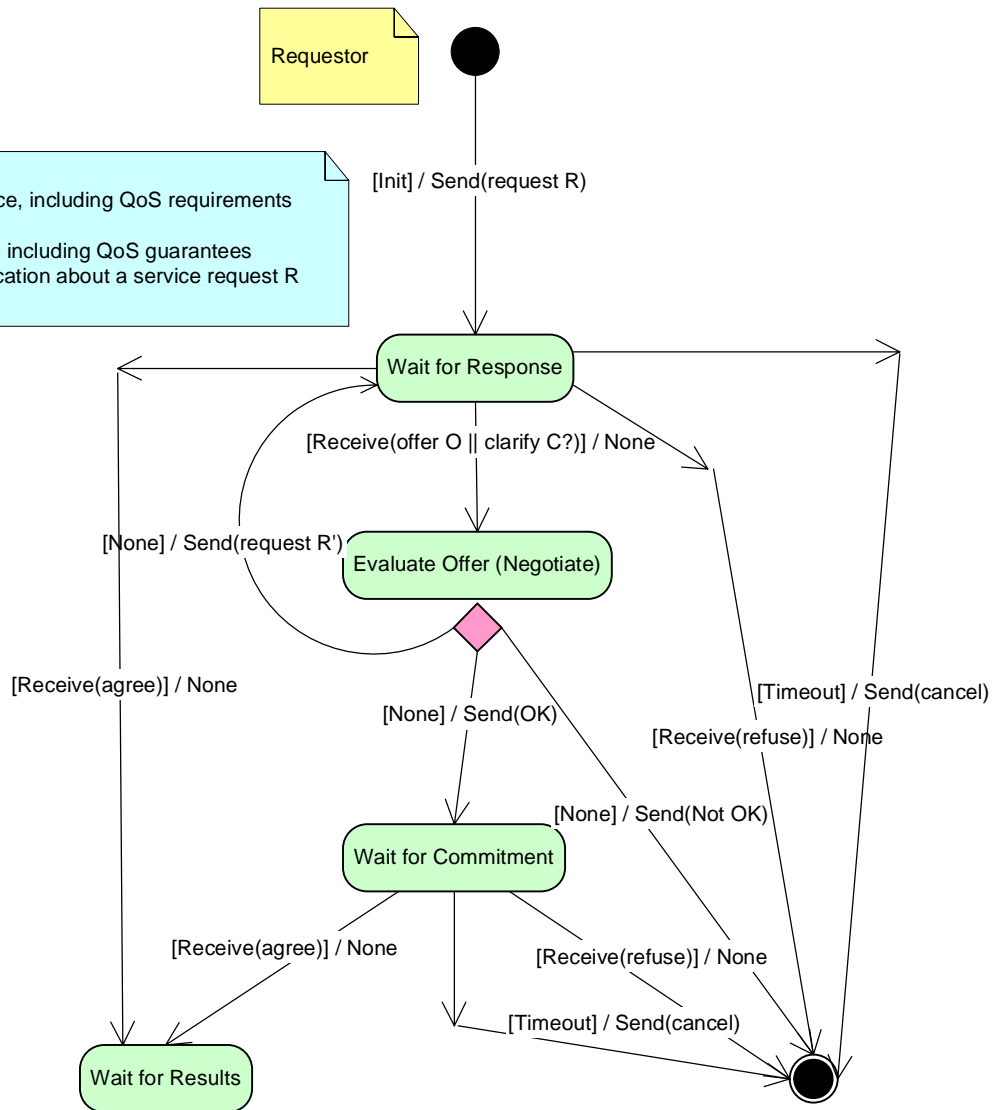


## UML State Diagrams for Semantic Web Service Engagement

Precondition: the requestor has selected a candidate service provider, based on a prior discovery and selection process/protocol.  
 Input: the identity of the candidate service provider and the requirements of the requestor.  
 (Note that this specification for Engagement is consistent with the FIPA Request Protocol.)

Notation:  
 R - a request for a service, including QoS requirements and requestor ID  
 O - an offer of a service, including QoS guarantees  
 C? - a request for clarification about a service request R



Output: an agreement about the service to be enacted and the identity of the provider. The agreement includes the negotiated QoS.

